

SHIBUYA - STATION, TOKYO

preliminary project

moving



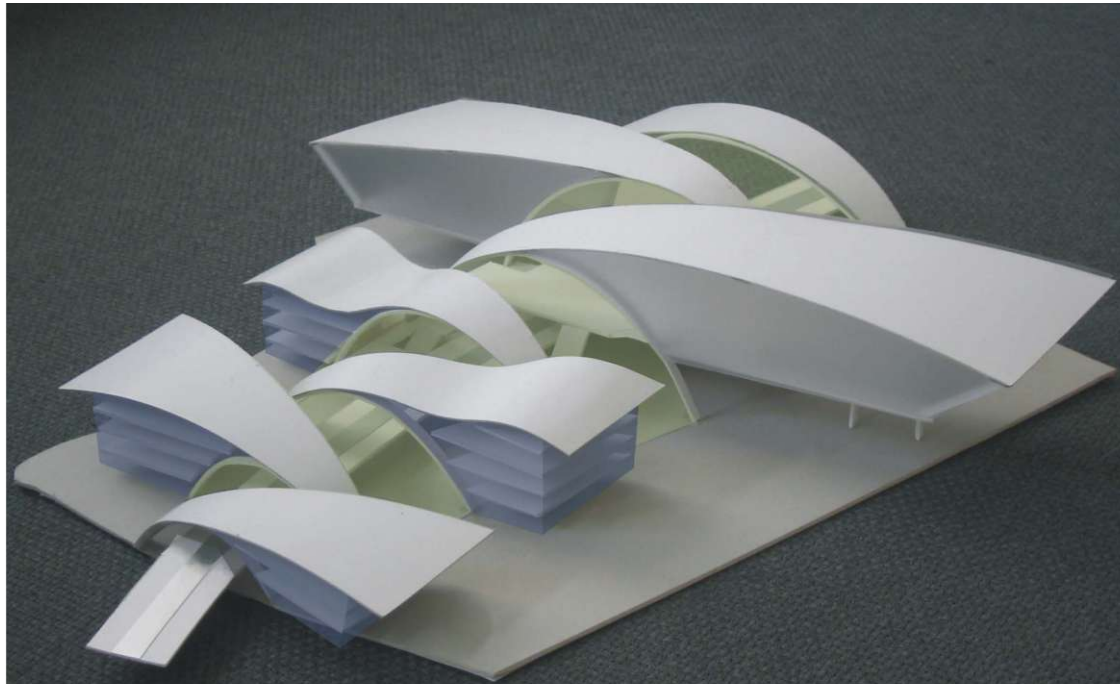
additional functions:

department store / office	7000 m ²
storage	~ 4000 m ²
underground parking	~ 7000 m ²
kiosk	
snack bar	
toilet	
viewing balcony	
cafe	~ 1000 m ² total
	~ 19000 m ²

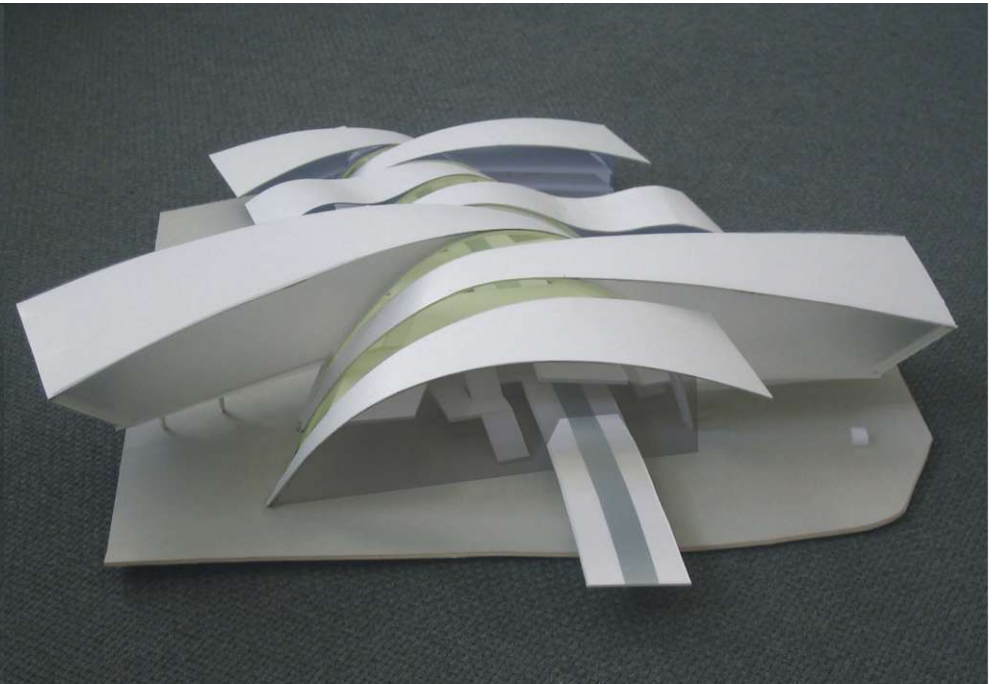


siteplan

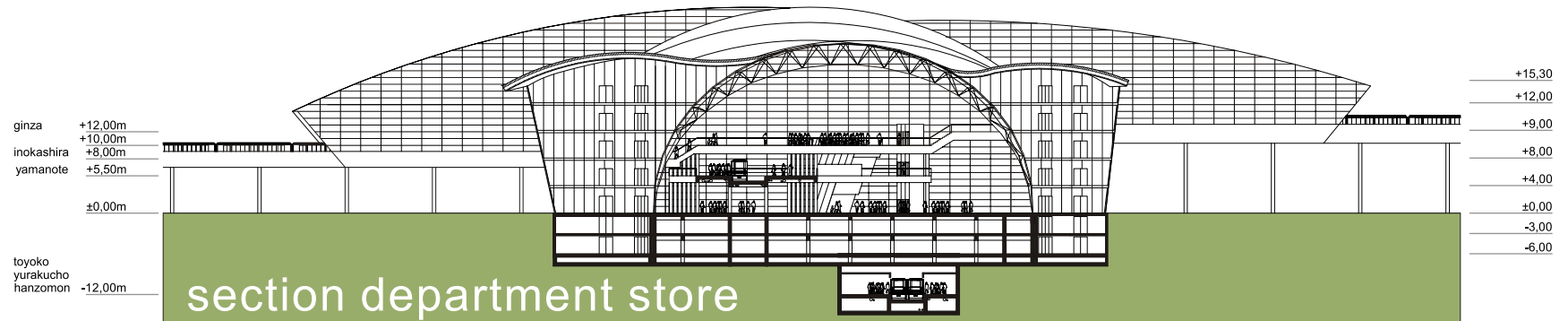
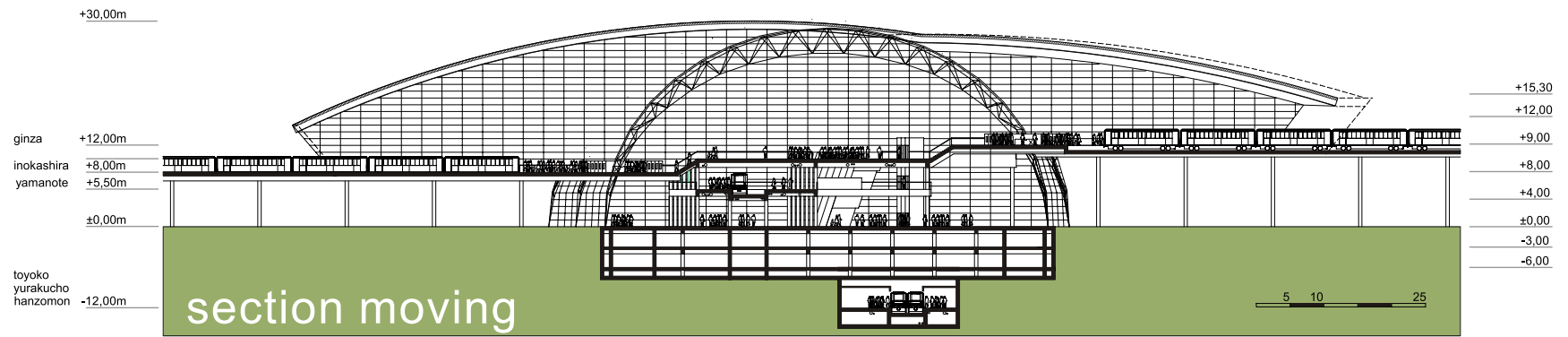
Design: Fritz Schmidt , Gerald Wolf Project: Disaster Mitigation, Vienna University of Technology
Project Leader: Prof. E. Simoncsics 2006/2007



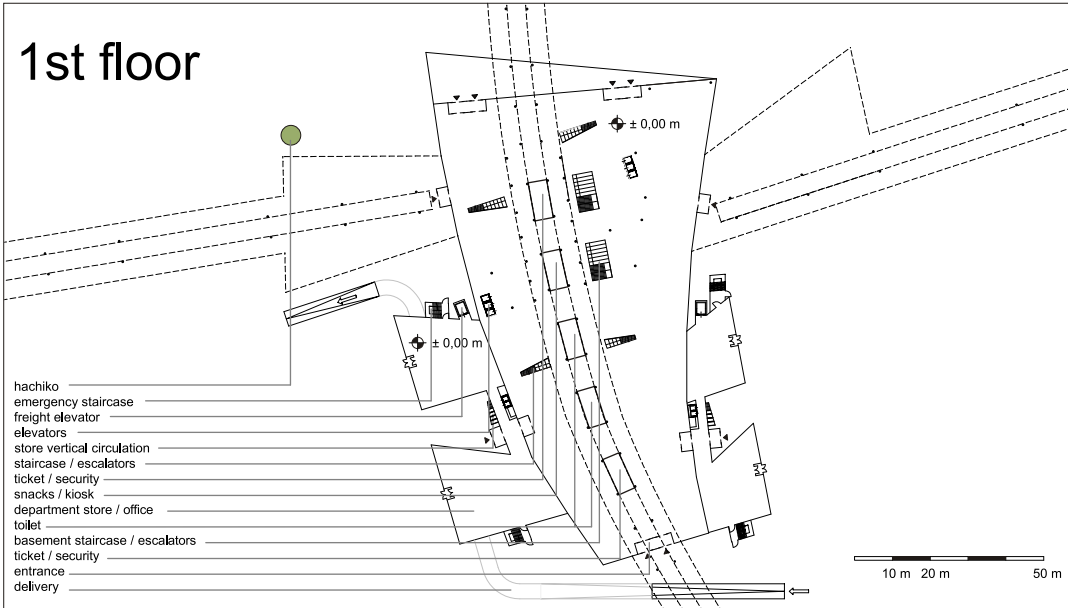
elevation



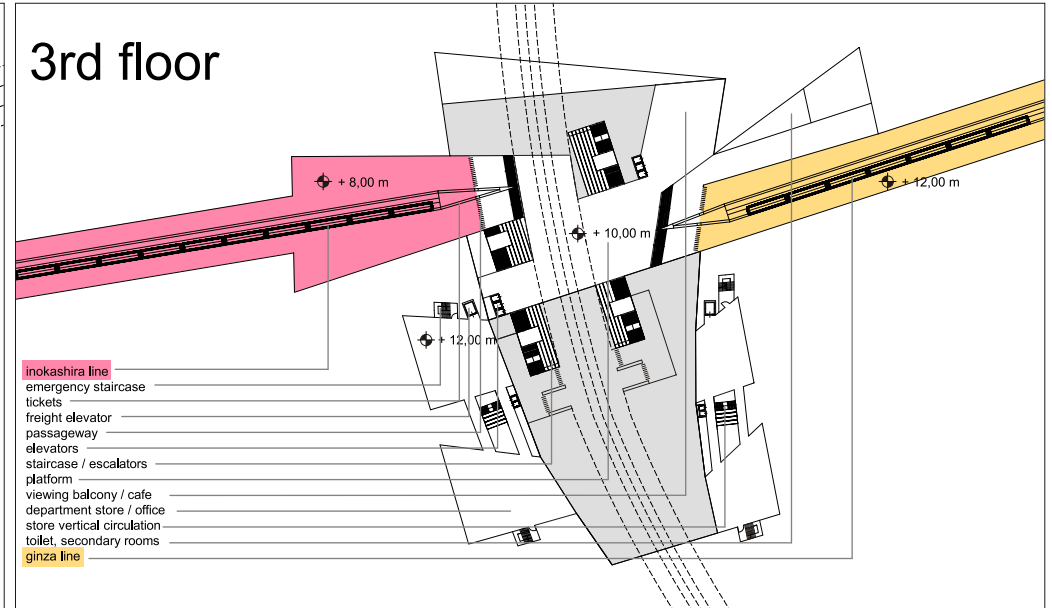
model



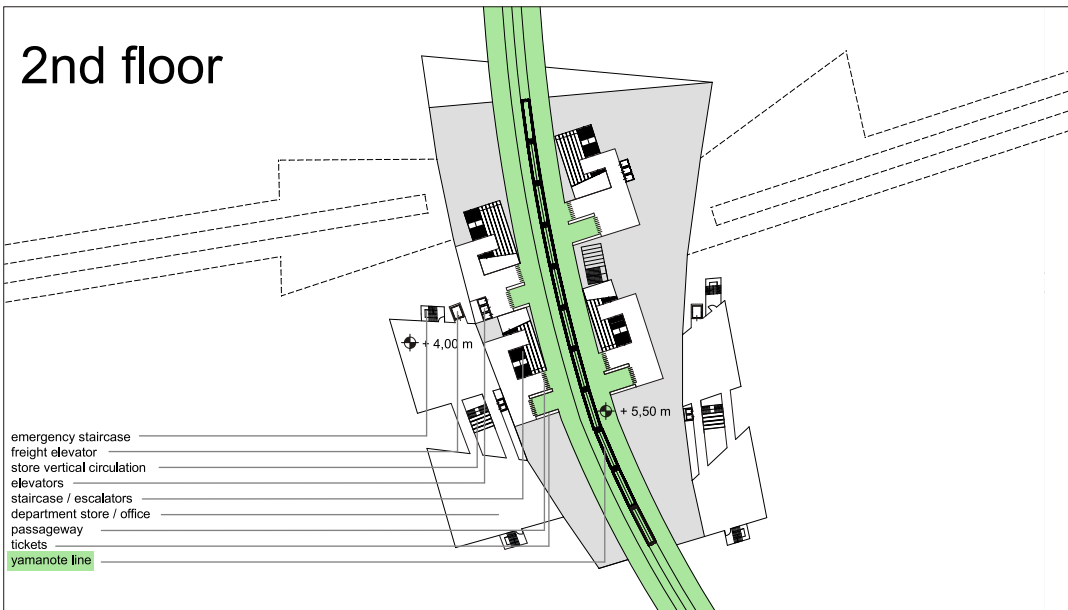
1st floor



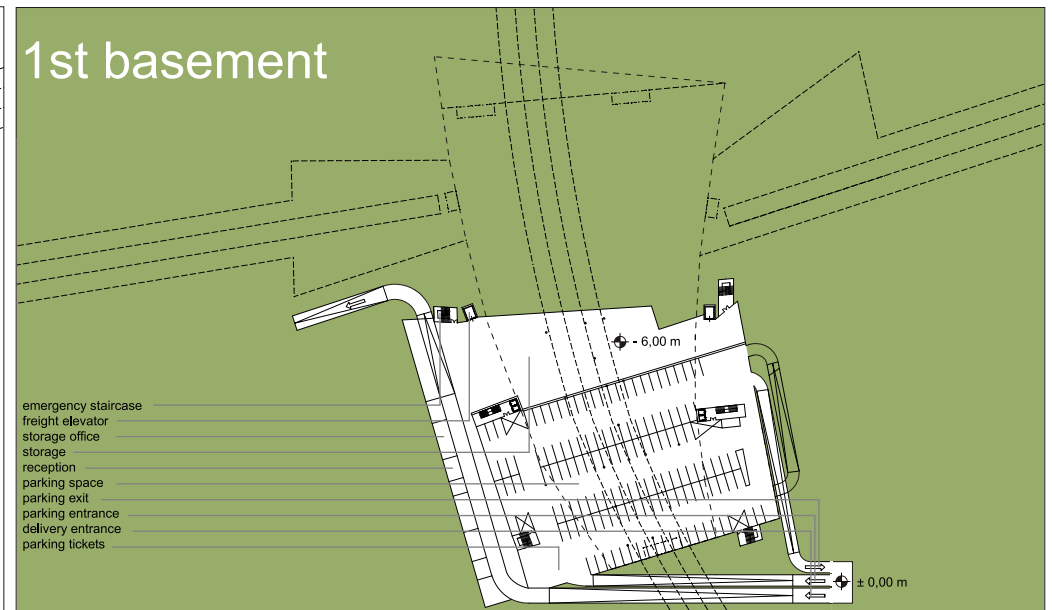
3rd floor

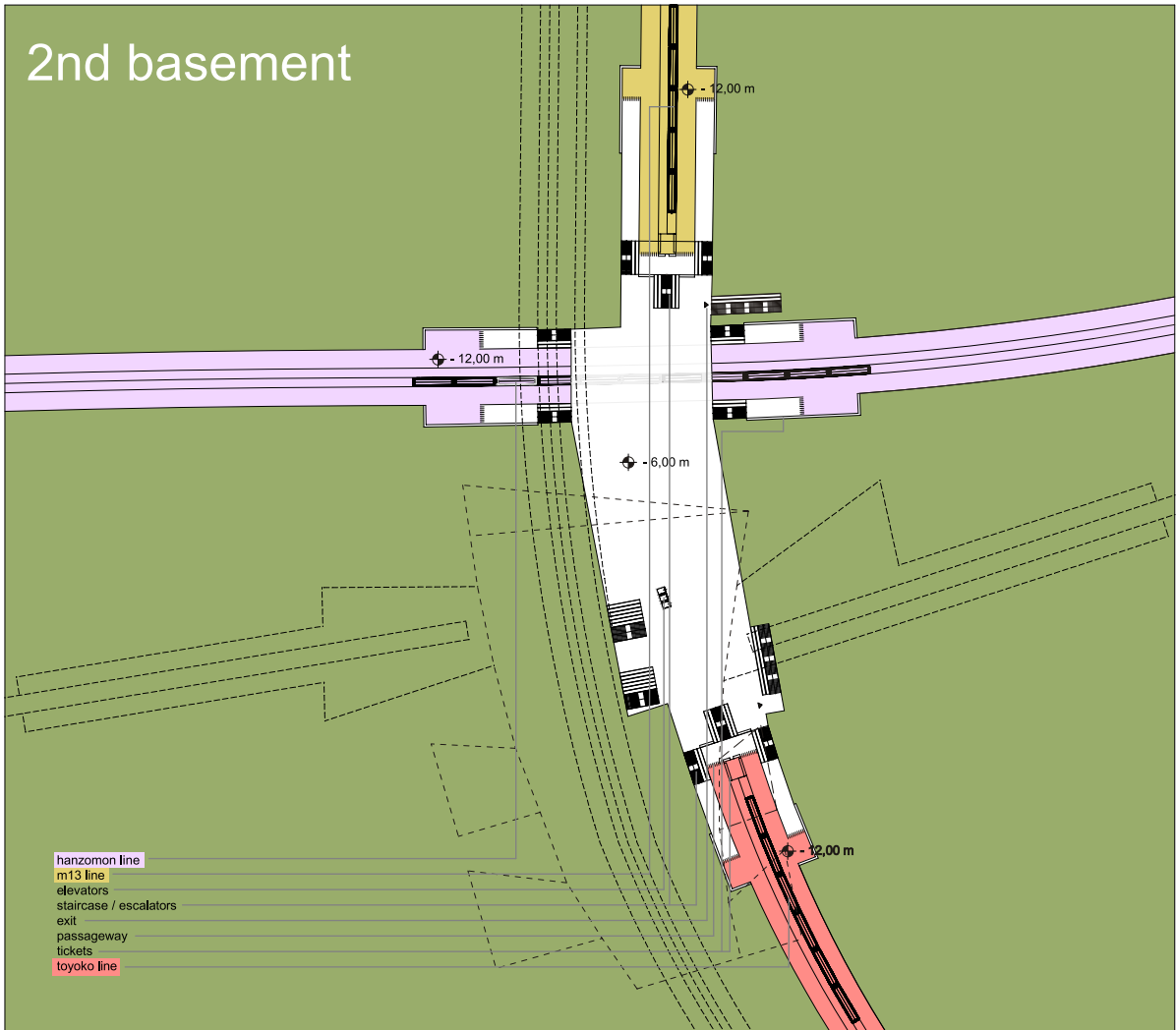


2nd floor

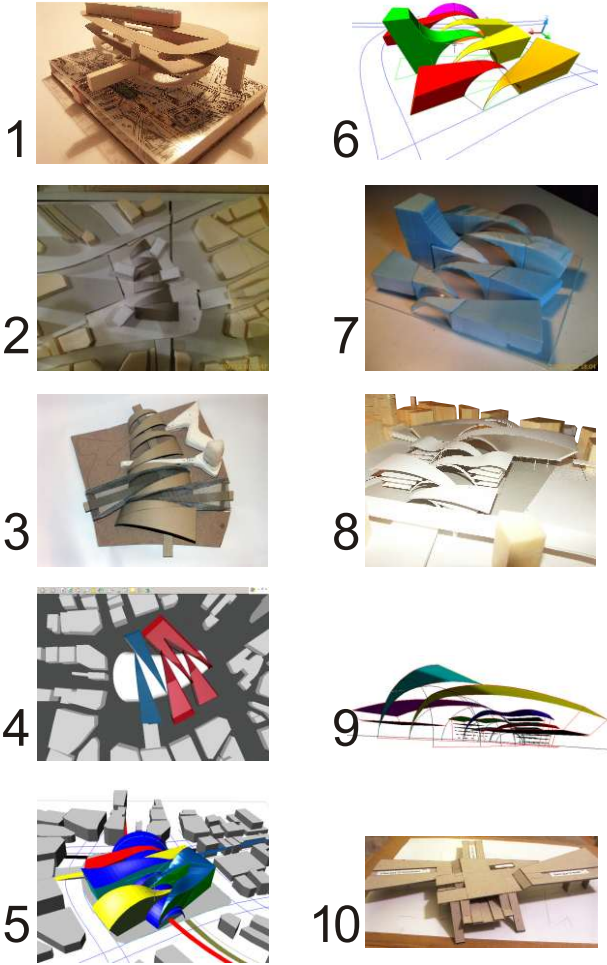


1st basement





evolution



moving

Design: Fritz Schmidt , Gerald Wolf Project: Disaster Mitigation, Vienna University of Technology
Project Leader: Prof. E. Simoncsics 2006/2007